

# STANDARD PC RANGE

## PC-SVMX PRODUCT GUIDE

### PC-SVMX Vario Surface Mount Male Screw Fix – 15kg

The PC-SVMX adds a high shear strength, extra heavy duty option to the Standard Range with a screw fix installation method, removing the need for special installation tools. With a 15kg pull out load, the clip is designed for mounting ceiling or heavyweight wall panels, and has a double detent safety feature providing two stages of clip engagement into the female clip. Can be paired with the PC-SF1, PC-RF1 and PC-AF1 for panel installation without special tools and is also compatible with the PC-F1A. The PC-SVMX features an inbuilt location point on the back of the clip which allows the installer to mark the male clip location on the panel without using a centrepoint (note: use CP-01ST with very hard panels e.g. HPL). See installation guide for more details.

#### BENEFITS

- Invisible panel fixing
- No special tools required for installation
- Extra heavy duty 15kg pull out load
- 100kg shear load
- Durable head shape, ideal for pre-fabrication
- Perfect panel alignment
- Rapid installation
- In-built centrepoint
- CNC machine compatible

#### APPLICATIONS

- Heavyweight wall panels
- Ceiling panels
- Pre-fabricated panels
- Architectural interiors
- Marine interiors

**PC-SVMX** 15kg



#### MATERIAL:

Black GF Nylon

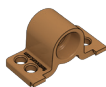
#### USE WITH:

PC-F1A

PC-RF1

PC-SF1

PC-AF1



#### MORE INFO:

Installation Guide PC-F1A, SF1, RF1  
Clip Layout Guide TD-02, 09, 12  
Panel Offset Guide

#### INSTALLATION: Partially exploded through section showing typical installation method

17.4mm gap between panel and substrate when used with PC-F1A

