

STANDARD PC RANGE

PC-SM2H PRODUCT GUIDE

PC-SM2H Surface Mount Male Adhesive Fix -10kg

The PC-SM2H heavy duty surface mount male is designed for use where installers prefer an adhesive fix, and an increased pull out load.

It is ideal for new composite materials. Patented SuperGrooves® mechanically engage into a 2 part epoxy for secure mounting. Compatible with all female clips in the Standard Range, and has a 10kg pull out load. Refer to Panel Offset Guide for information about gap between substrate and panel, pull out and shear loads.

PC-SM2H 10kg

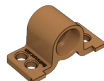
USE WITH:

PC-F1A

PC-RF1

PC-SF1

PC-AF1



MATERIAL:

Black Acetal copolymer

MORE INFO:

Installation Guide PC-F1A, SF1, RF1
Clip Layout Guide TD-02, 09, 12
Panel Offset Guide

BENEFITS

- Self-aligning secure mounting (min. 10kg per clip)
- Installation requires no special tools
- Uses a 2 part epoxy
- No drilling of panels, fast installation
- Works with existing Fastmount clips
- Allows for flexing and expansion of panel and support frame materials

APPLICATIONS

- Mounting thicker panels with increased loading
- Soft or honeycomb cored panels with thin facings
- Mounting panels where no drilling is preferred
- Ideal for refit

INSTALLATION: Partially exploded through section showing typical installation method

