

# Stratlock Range

## SL-FB1 & SL-FB1-FR

The Stratlock SL-FB1 alongside the male counterpart SL-M10 and SL-M18, is a female clip system designed to be used with the Stratlock Rail System (SL-RLE) and is available in both standard and fire-rated versions. The SL-FB1 is ideal for commercial interior fit-outs, a wide range of architectural applications, and is suitable for both wall and ceiling panels.

The SL-FB1 is compatible with the SL-M10 and SL-M18 male clips, offering either a 10kg (22lb) or 18kg (40lb) pull out load. The SL-M18 male clip is also available in a fire-rated version (SL-M18-FR).

The SL-FB1 provides installation of panels in conjunction with the Stratlock Rail System, designed specifically to reduce on-site installation time while ensuring long-lasting performance in demanding applications.

The SL-FB1 features a 360-degree adjustability function, allowing for precise positioning of panels before locking into place via a 2-stage engagement process. The adjustability allows panel adjustment of 8mm (3/8") before locking panels into place. The use of the SL-FB1, alongside any of the Stratlock Range male clips provides a 28.3mm (1") gap between panel and substrate.



**SL-FB1**  
STRATLOCK FEMALE FRONT  
MOUNT CLIP - SCREW FIX



**SL-FB1-FR**  
STRATLOCK FEMALE FRONT  
MOUNT CLIP FIRE RATED -  
SCREW FIX

**USE WITH:**



**SL-M10**  
STRATLOCK MALE  
CLIP 10KG / 22LB



**SL-M18**  
STRATLOCK MALE  
CLIP 18KG / 40LB



**SL-M18-FR**  
STRATLOCK MALE CLIP  
18KG / 40LB FIRE RATED



**CP-01ST**  
STANDARD RANGE  
CENTRE POINT

## APPLICATIONS

- Commercial fit-outs (retail and offices)
- Hospitality
- Healthcare
- Education
- Wall and ceiling panels
- Fire-rated applications

*\*Not suitable for glass and fibre-cement panels.*

## FEATURES



**Simple Installation**

Designed for easy installation while also saving time and reducing re-work.



**Adjustability**

Features 360-degree adjustability, allowing for versatile and precise positioning of panels 8mm total (3/8") before locking into final position.



**Non-Sequential Removability**

Offers the advantage of non-sequential removability, allowing panels to be detached in any order for greater flexibility during maintenance and adjustments.



**No Top Gap Required**

Allows for the removal or replacement of the top panel without leaving a gap above it, ensuring a seamless and flush fit.



**Heavy-Duty Mounting**

Robust fixing, allowing for heavy panel mounting and suitable for heavy duty applications.

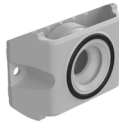
# Stratlock Range

## SL-FB1 & SL-FB1-FR

### TECHNICAL DATA



**SL-FB1**  
MATERIAL: ACETAL



**SL-FB1-FR**  
MATERIAL: PBT & NYLON

The following table data is based on the below models being used in conjunction with the SL-RLE.

Model	Material	Min. Pull Out Load	Min. Shear Load	Max panel weight density: Walls	Max panel weight density: Ceilings
SL-M10	Glass Filled Nylon	10kg (22lb)	80kg (176lb)	15kg/m <sup>2</sup> (3lb/ft <sup>2</sup> )	10kg/m <sup>2</sup> (2lb/ft <sup>2</sup> )
SL-M18	Glass Filled Nylon	18kg (40lb)	105kg (232lb)	25kg/m <sup>2</sup> (5lb/ft <sup>2</sup> )	25kg/m <sup>2</sup> (5lb/ft <sup>2</sup> )
SL-M18-FR	Shinrite	18kg (40lb)	80kg (176lb)	25kg/m <sup>2</sup> (5lb/ft <sup>2</sup> )	25kg/m <sup>2</sup> (5lb/ft <sup>2</sup> )

As an example, for a 2400mm x 1200mm (8'x4') panel, the maximum panel weights for each male clip type would be as follows:

#### WALLS

SL-M10: Max weight 43kg (95lbs)  
SL-M18: Max weight 72kg (159lbs)

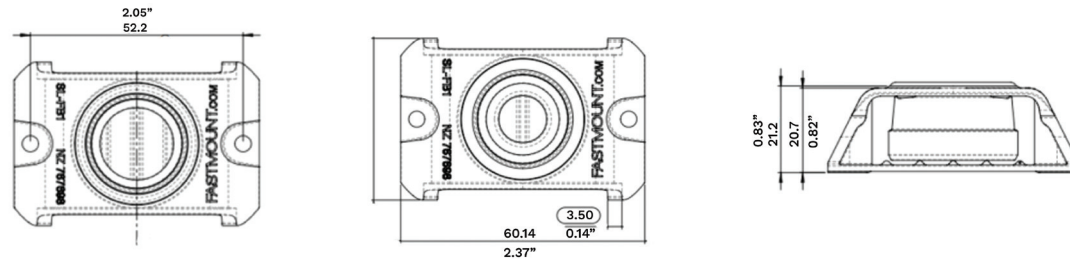
#### CEILING

SL-M10: Max weight 29kg (64lbs)  
SL-M18: Max weight 72kg (159lbs)

*\*Panel weight data is valid only if installed as per the relevant Clip Layout Guide. If you are still unsure about panel weight recommendations or would like to confirm any other details regarding panel weights, please contact [info@fastmount.com](mailto:info@fastmount.com). Products have been tested by a recognized international quality/assurance company. Test reports are available by request. All clips have been tested up to 500 cycles while still maintaining the minimum pull out load\**

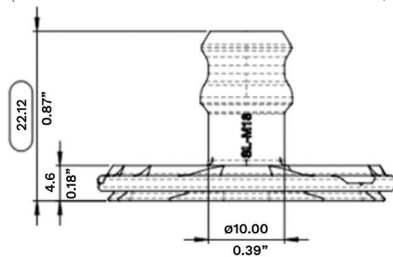
#### SL-FB1 CLIP DIMENSIONS

(Dimensions are identical for both the SL-FB1 and SL-FB1-FR)



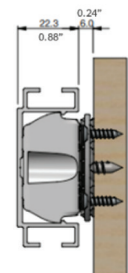
#### MALE CLIP DIMENSIONS

(Dimensions are identical for the SL-M10, SL-M18 and SL-M18-FR)



#### PANEL GAP

The use of the SL-FB1 alongside any of the male clips from the Stratlock Range, provides a 28.3mm (1") gap between panel and substrate.



#### ADJUSTABILITY

The SL-FB1 allows for a total of 8mm (3/8") adjustability or 4mm (5/32") in any lateral direction before locking into the final position. This is done via a 2-stage engagement process.

# Stratlock Range

## SL-FB1 & SL-FB1-FR

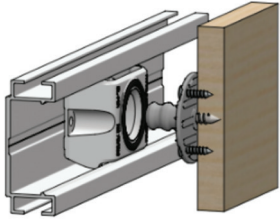
### INSTALLATION OPTIONS

#### SL-FB1 & SL-FB1-FR

The SL-FB1 is designed to be installed onto the Stratlock rail (SL-RLE).



SL-RLE (STRATLOCK RAIL)



Installed using 2x #5 16mm (5/8") long screws.

#### Male Clips

SL-M10, SL-M18 and SL-M18-FR can either be screwed or glue mounted.



SL-M10 SL-M18 SL-M18-FR

#### SCREW MOUNTED

All Stratlock Range male clips can be screwed using either 1x #8 32mm (1 1/4") screw through the center, or 3x #5 12mm (1/2") screws through the base grooves.

#### GLUE MOUNTED

Clips can be glued using a high quality 2-part epoxy glue.

Fastmount recommend the testing of glue with any Fastmount product first, to ensure the integrity of the hold. If unsure about which glue to use, please contact [info@fastmount.com](mailto:info@fastmount.com) for more details.

While there are a variety of different adhesives that are suitable to use alongside the Stratlock male clips, one adhesive that Fastmount recommends is the Kommerling Korapur 784/1. However, it is recommended to still conduct preliminary testing to ensure compatibility.

#### CENTER POINTS

The CP-01ST center points can be used in conjunction with the SL-FB1, and alongside any of the male clips from the Stratlock Range.



The center points are inserted into the SL-FB1 female clips. The panel is then pushed against the center points, marking the center points for the male clips, to help ensure correct alignment between panel and framing.

# Stratlock Range

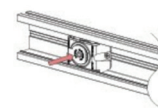
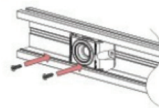
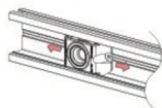
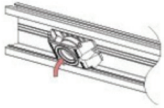
## SL-FB1 & SL-FB1-FR

### INSTALLATION STEPS

The below installation step guide covers the installation of the SL-FB1, SL-FB1-FR and corresponding male clip alongside the SL-RLE Stratlock Rail System.

#### INSTALL SL-FB1

- 1** Insert SL-FB1 into SL-RLE rail.
- 2** Slide SL-FB1 to correct position.
- 3** Secure SL-FB1 using 2x #5 16mm (5/8") screws.
- 4** Insert CP-01ST into SL-FB1, press to mark panel.



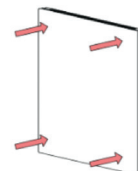
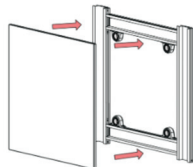
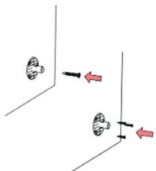
- 5** Drill out mark with a 3mm (1/8") drill bit.



#### INSTALL MALE CLIP: OPTION 1 SCREW MOUNTED

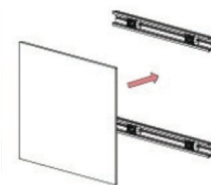
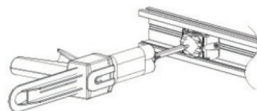
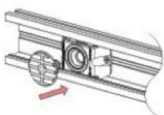
Male clips can be screwed using either 1x #8 32mm (1 1/4") screw through the center, or 3x #5 12mm (1/2") screws through the base grooves.

- 6** Install male clip using 1x #8 CSK 32mm (1 1/4") screw through center or 3x #5 CSK 12mm (1/2") screws through outer grooves.
- 7** Engage panel to first click of male clip into SL-FA.
- 8** Adjust panel to find correct position.
- 9** Once panel is in correct location, engage second click by pressing panel into final position.



#### INSTALL MALE CLIP: OPTION 2 GLUE MOUNTED

- 6** Engage male clip two clicks into SL-FB1.
- 7** Apply glue adhesive to back of male clip.
- 8** Press panel firmly into place, and hold against male clips until adhesive dries.
- 9** Engage panel to first click of male into SL-FB1.



- 10** Adjust panel to find correct position.
- 10** Once panel is in correct location, engage second click by pressing panel into final position.



# Stratlock Range

SL-FB1 & SL-FB1-FR

## REMOVING PANELS

---

Fastmount also provide panel removal tools which can help make the removal of panels easier.



**CT-05**  
Stainless steel removal tool, for removing upholstered panels. Requires a minimum gap of 3mm (0.12").



**CT-05H**  
Stainless steel removal tool with fold down hook, for use with lacquered and/or textured panels. Hook requires a minimum gap of 1mm (0.04").



**CT-17**  
Suction cup sucker tool, for removing heavier panels or painted/pre-finished panels. Two required for controlled panel removal.