

Stratlock Range

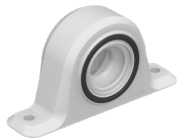
SL-SFA & SL-SFA-FR

The Stratlock SL-SFA, alongside the male counterpart SL-M10 and SL-M18, is a side mounted clip system designed for heavy-duty mounting applications and is available in both standard and fire-rated versions. The SL-SFA is ideal for commercial interior fit-outs, a wide range of architectural applications, and is suitable for both wall and ceiling panels.

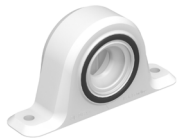
The SL-SFA is compatible with the SL-M10 and SL-M18 male clips, offering either a 10kg (22lb) or 18kg (40lb) pull out load. The SL-M18 male clip is also available in a fire-rated version (SL-M18-FR).

The SL-SFA provides installation of panels to timber, steel, and aluminium framework, designed specifically to reduce on-site installation time while ensuring long-lasting performance in demanding applications.

The SL-SFA features a 360-degree adjustability function, allowing for precise positioning of panels before locking into place via a 2-stage engagement process. The adjustability allows panel adjustment of 8mm (3/8") before locking panels into place. The use of the SL-SFA provides a 6mm (0.24") gap between panel and substrate.



SL-SFA
FEMALE SIDE MOUNT CLIP



SL-SFA-FR
FEMALE FIRE RATED SIDE MOUNT CLIP

USE WITH:



SL-M10
STRATLOCK MALE
CLIP 10KG



SL-M18
STRATLOCK MALE
CLIP 18KG



SL-M18-FR
STRATLOCK MALE CLIP
18KG FIRE RATED



CP-01ST
STANDARD RANGE
CENTRE POINT

APPLICATIONS

- Commercial fit-outs (retail and offices)
- Healthcare
- Hospitality
- Education
- Wall and ceiling panels
- Fire-rated areas

**Not suitable for glass and fibre-cement panels.*

FEATURES



Simple Installation

Designed for easy installation while also saving time and reducing re-work.



Adjustability

Features 360-degree adjustability, allowing for versatile and precise positioning of panels 8mm total (3/8") before locking into final position.



Non-Sequential Removability

Offers the advantage of non-sequential removability, allowing panels to be detached in any order for greater flexibility during maintenance and adjustments.



No Top Gap Required

Allows for the removal or replacement of the top panel without leaving a gap above it, ensuring a seamless and flush fit.



Heavy-Duty Mounting

Robust fixing, allowing for heavy panel mounting and suitable for heavy duty applications.

Stratlock Range

SL-SFA & SL-SFA-FR

TECHNICAL DATA



SL-SFA
MATERIAL: ACETAL



SL-SFA-FR
MATERIAL: PBT & NYLON

The following table data is based on the below models being used in conjunction with the SL-SFA or SL-SFA-FR.

Model	Material	Min. Pull Out Load	Min. Shear Load	Max panel weight density: Walls	Max panel weight density: Ceilings
SL-M10	Glass Filled Nylon	10kg (22lb)	80kg (176lb)	15kg/m ² (3 lb/ft ²)	10kg/m ² (2 lb/ft ²)
SL-M18	Glass Filled Nylon	18kg (40lb)	105kg (232lb)	25kg/m ² (5 lb/ft ²)	25kg/m ² (5 lb/ft ²)
SL-M18-FR	Shinrite	18kg (40lb)	80kg (176lb)	25kg/m ² (5 lb/ft ²)	25kg/m ² (5 lb/ft ²)

*Products have been tested by a recognized international quality/assurance company. Test reports are available by request. If you are still unsure about panel weight recommendations or would like to confirm any other details regarding panel weights, please contact info@fastmount.com. All clips have been tested up to 500 cycles while still maintaining the minimum pull out load.

As an example, for a 2400mm x 1200mm (8'x4') panel, the maximum panel weights for each male clip type would be as follows:

WALLS

SL-M10: Max weight 43kg (95lbs)
SL-M18: Max weight 72kg (159lbs)

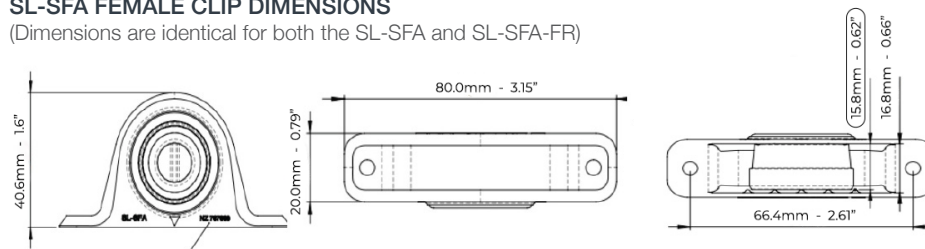
CEILINGS

SL-M10: Max weight 29kg (64lbs)
SL-M18: Max weight 72kg (159lbs)

*Panel weight data is valid only if installed as per the relevant Clip Layout Guide.

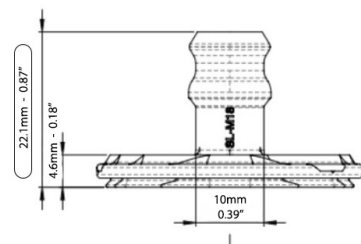
SL-SFA FEMALE CLIP DIMENSIONS

(Dimensions are identical for both the SL-SFA and SL-SFA-FR)



MALE CLIP DIMENSIONS

(Dimensions are identical for the SL-M10, SL-M18 and SL-M18-FR).



PANEL GAP

The use of the SL-SFA alongside any of the male clips from the Stratlock Range, provides a 6mm (0.24") gap between panel and substrate.



ADJUSTABILITY

The SL-SFA allows for a total of 8mm (3/8") adjustability or 4mm (5/32") in any lateral direction before locking into the final position. This is done via a 2-stage engagement process.

Stratlock Range

SL-SFA & SL-SFA-FR

INSTALLATION OPTIONS

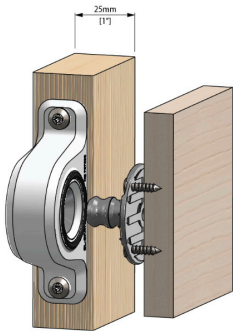
SL-SFA FEMALE CLIP

The SL-SFA can be seamlessly integrated and installed onto existing framework and is suitable to be installed onto timber, aluminum, and steel framework. It is important that the framework is flat and on the same plane to ensure the clips can be accurately mounted to hold the panels flat.

OPTION 1:

TIMBER BATTEN/TIMBER FRAMING

Min thickness: 25mm (1")
Installed using 2x #8 16mm (5/8") long pan head screws.

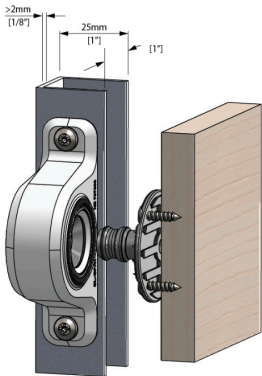


OPTION 2:

ALUMINIUM U-CHANNEL/ALUMINIUM EXTRUSION

Min thickness: 2mm (5/64")
Installed using 2x #8 16mm (5/8") long Tek screws.

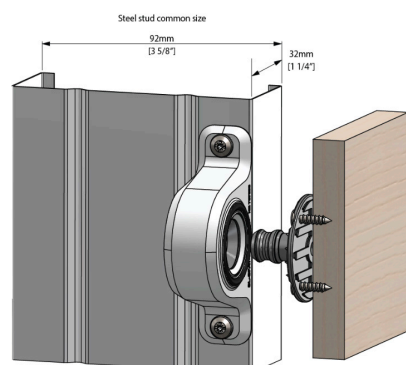
A commonly used u-channel size is 25mm (1") x 25mm (1"), with a minimum thickness of 2mm (1/8")



OPTION 3:

STEEL STUD/STEEL FRAMING

Installed using 2x #8 16mm (5/8") long Tek screws.



MALE CLIPS

SL-M10, SL-M18 AND SL-M18-FR can either be screwed or glue mounted.



SL-M10

SL-M18

SL-M18-FR

SCREW MOUNTED

All Stratlock Range male clips can be screwed using either 1x #8 32mm (1 1/4") screw through the center, or 3x #5 12mm (1/2") screws through the base groove.

GLUE MOUNTED

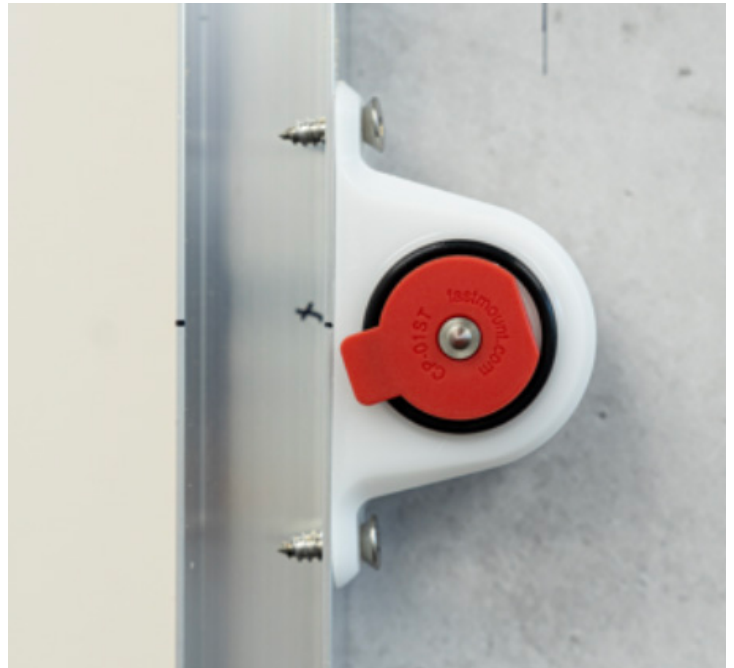
Clips can be glued using a high quality 2-part epoxy glue.

Fastmount recommend the testing of glue with any Fastmount product first, to ensure the integrity of the hold. If unsure about which glue to use, please contact info@fastmount.com for more details.

While there are a variety of different adhesives that are suitable to use alongside the Stratlock male clips, one adhesive that Fastmount recommends is the Kommerling Korapur 784/1. However, it is recommended to still conduct preliminary testing to ensure compatibility.

CENTER POINTS

The CP-01ST center points can be used in conjunction with the SL-SFA and any of the male clips from the Stratlock Range.



The center points are inserted into the SL-SFA female clips. The panel is then pushed against the center points, marking the center points for the Stratlock Range male clips, to help ensure correct alignment between panel and framing.

Stratlock Range

SL-SFA & SL-SFA-FR

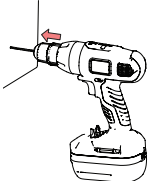
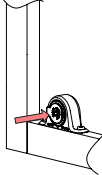
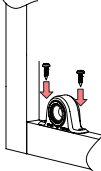
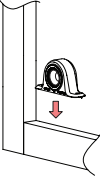
INSTALLATION STEPS

The below installation step guide covers the installation of the SL-SFA, SL-SFA-FR and corresponding male clip for all three applications:

- Timber Batten/Timber Framing
- Aluminum U-Channel/Aluminum Extrusion
- Steel Stud/Steel Framing

INSTALL SL-SFA

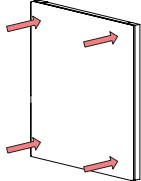
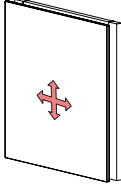
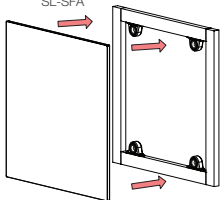
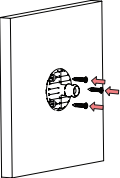
- 1** Position SL-SFA along frame.
- 2** Screw into position using 2x #8 pan head 16mm (5/8") screws for timber OR #8 tek 16mm (5/8") screws for steel/aluminum.
- 3** Press CP-01ST centrepoint into SL-SFA, press panel onto point to mark center point for male clip.
- 4** Drill out mark created by CP-01ST with 3mm (1/8") drill bit.



INSTALL MALE CLIP: OPTION 1 SCREW MOUNTED

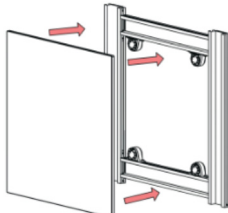
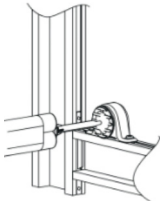
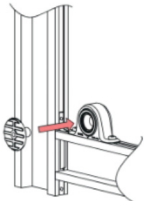
Male clips can be screwed using either 1x #8 32mm (1 1/4") screw through the center, or 3x #5 12mm (1/2") screws through the base grooves.

- 5** Install male clip using 1x #8 CSK 32mm (1 1/4") screw through centre OR 3x #5 CSK 12mm (1/2") screws through outer grooves.
- 6** Engage panel to first click of male clip into SL-SFA.
- 7** Adjust panel to find correct position.
- 8** Once panel is in correct location, engage second click by pressing panel into final position.



INSTALL MALE CLIP: OPTION 2 GLUE MOUNTED

- 6** Engage male clip two clicks into SL-SFA.
- 7** Apply glue adhesive to back of male clip.
- 8** Press panel firmly into place and hold against male clips until adhesive dries.



**For recommended clip spacings and quantities based on certain panel sizes, please refer to our clip layout guides*

REMOVING PANELS

Fastmount also provide panel removal tools which can help make the removal of panels easier.



CT-05
Stainless steel removal tool, for removing upholstered panels. Requires a minimum gap of 3mm (0.12").



CT-05H
Stainless steel removal tool with fold down hook, for use with lacquered and/or textured panels. Hook requires a minimum gap of 1mm (0.04").



CT-05H
Suction cup sucker tool, for removing heavier panels or painted/pre-finished panels. Two required for controlled panel removal.