

PC-M2H Self Tapping Male Heavy Duty

INDUSTRY FIT:



SPECIFICATIONS:

STANDARD RANGE

The Fastmount® multi-award winning system has revolutionized the mounting of panels. Panels can easily be removed and refitted in any sequence time after time.

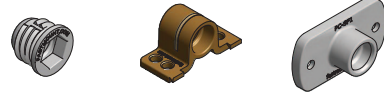
The heavy duty self tapping clip, PC-M2H adds to the standard range. Specifically designed for thicker panels with increased loading requirements, where PC-M1B is not strong enough.

USE WITH:

PC-F1A

PC-RF1

PC-SF1



MATERIAL:

Black acetal copolymer

MORE INFO:

Installation Guide IG_PC-F1, SF1, RF1
Setout Guide TD-02, 09, 12

BENEFITS

- Self-aligning installation without adhesives
- Perfect panel alignment secure mounting every time
- Remove and refit panels in any sequence 100+ times
- Saves time and reduces cost
- 10kg pull out load per clip
- Allows for flexing and expansion of panel and support frame materials

APPLICATIONS

- Suitable for covered or painted panels with minimum 8mm thickness
- Ceiling and wall panels
- Exterior deckhead panels
- Refits and upgrades of existing installations
- Install into a variety of substrates

INSTALLATION: Partially exploded through section showing typical installation method

